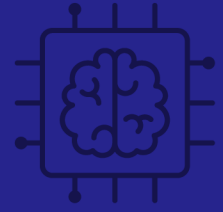
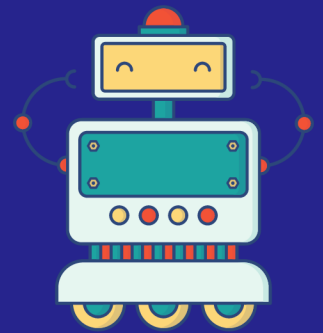
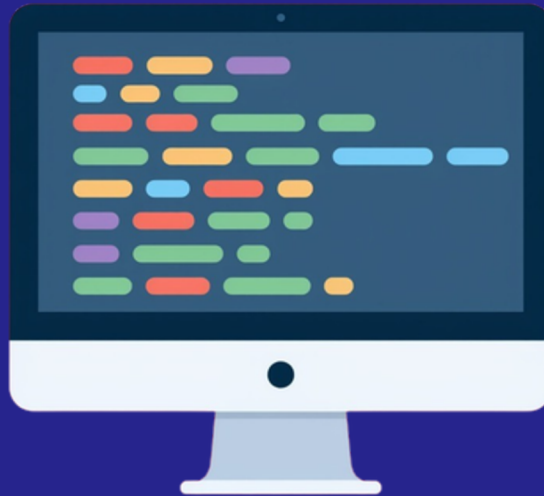
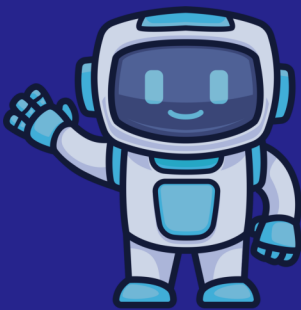




NEUROVA NEURALS



ROVYBLOX INSTALLATION MANUAL & ROVYBOT CONNECTION GUIDE



RovyBlox Installation

About RovyBlox

RovyBlox is an educational coding and robotics software platform designed for programming, AI learning, and robotics activities with RovyBot.

1. RovyBlox Browser Version

- Open your web browser and visit:
- Website: www.rovyblox.com
- No installation is required for the browser version.

2. RovyBlox EXE Software Installation

- Download the Software
- Visit: www.rovylearn.rovyblox.com
- Log in using the following credentials:
 1. **Username: nnrovylearn**
 2. **Password: NNrovylearn@123#**
- After logging in, click **Software Downloads**.
- You will see:
 1. **Download for Windows (RovyBlox EXE)**
 2. **Download APK (Android Version)**
- Select the version required for your device and download the software.

Install the Software

- Locate the downloaded **RovyBlox Setup (.exe) file**.
- Double-click the file to start installation.
- If a Windows security prompt appears, click:
 1. **Run**
 2. **or More Info** → **Run Anyway**
- Follow the installation wizard steps.

- Click:
 1. **Next**
 2. **Install**
 3. **Finish**
- Launch RovyBlox from the desktop shortcut or Start Menu.

RovyBot Connection Process

1. RovyBot Connection in EXE RovyBlox

The EXE version supports both **Serial (USB)** and **Bluetooth** connections.

A. Serial (USB) Connection

1. Connect the RovyBot to the computer using a **USB** cable.
2. Open the RovyBlox EXE Software.
3. Select the **RovyBot** Extension.
4. Click the **Connect** button in the navigation bar.
5. Select the connected **RovyBot** device (COM Port).
6. Start programming and controlling the RovyBot.

B. Bluetooth Connection

1. Turn ON the **RovyBot**.
2. Pair the **RovyBot** with the computer through the system's Bluetooth settings.
 - Open **Bluetooth Settings** on your computer.
 - Search for available devices.
 - Select **RovyBot(With unique number)** and complete the pairing process.
3. Open the RovyBlox EXE Software.
4. Select the RovyBot Extension.
5. Click the Connect button in the navigation bar.
6. Select the paired **RovyBot** device.
7. Start programming and controlling the RovyBot.

2. RovyBot Connection in Browser RovyBlox

The Browser Version supports **Serial (USB)** Connection Only.

- Connect the **RovyBot** to the system using a USB cable.
- Open the browser version:
www.rovyblox.com
- Select the **RovyBot** Extension.
- Click the **Connect** button in the navigation bar.
- Select and connect the **RovyBot** device.
- Start programming and controlling the RovyBot.